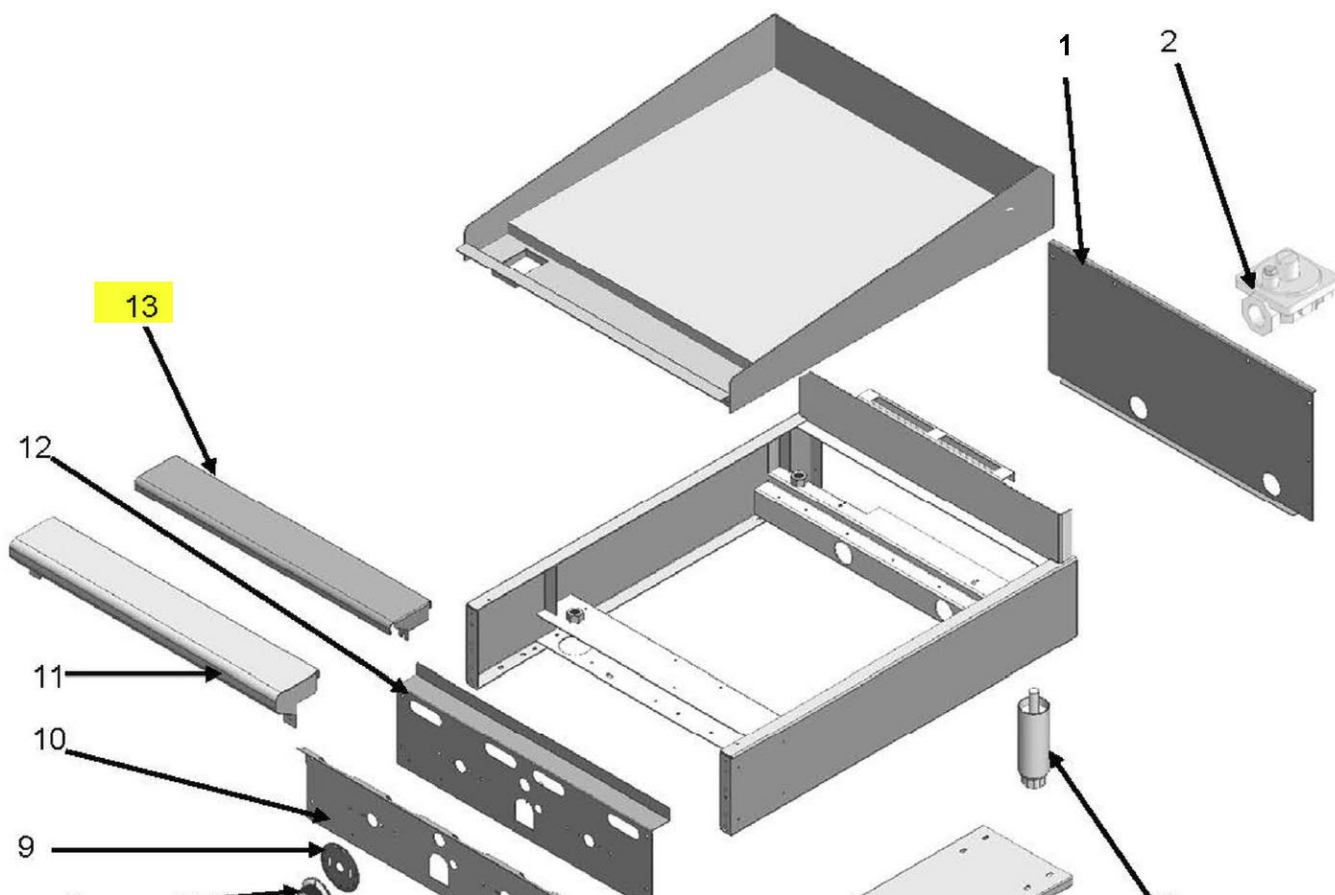


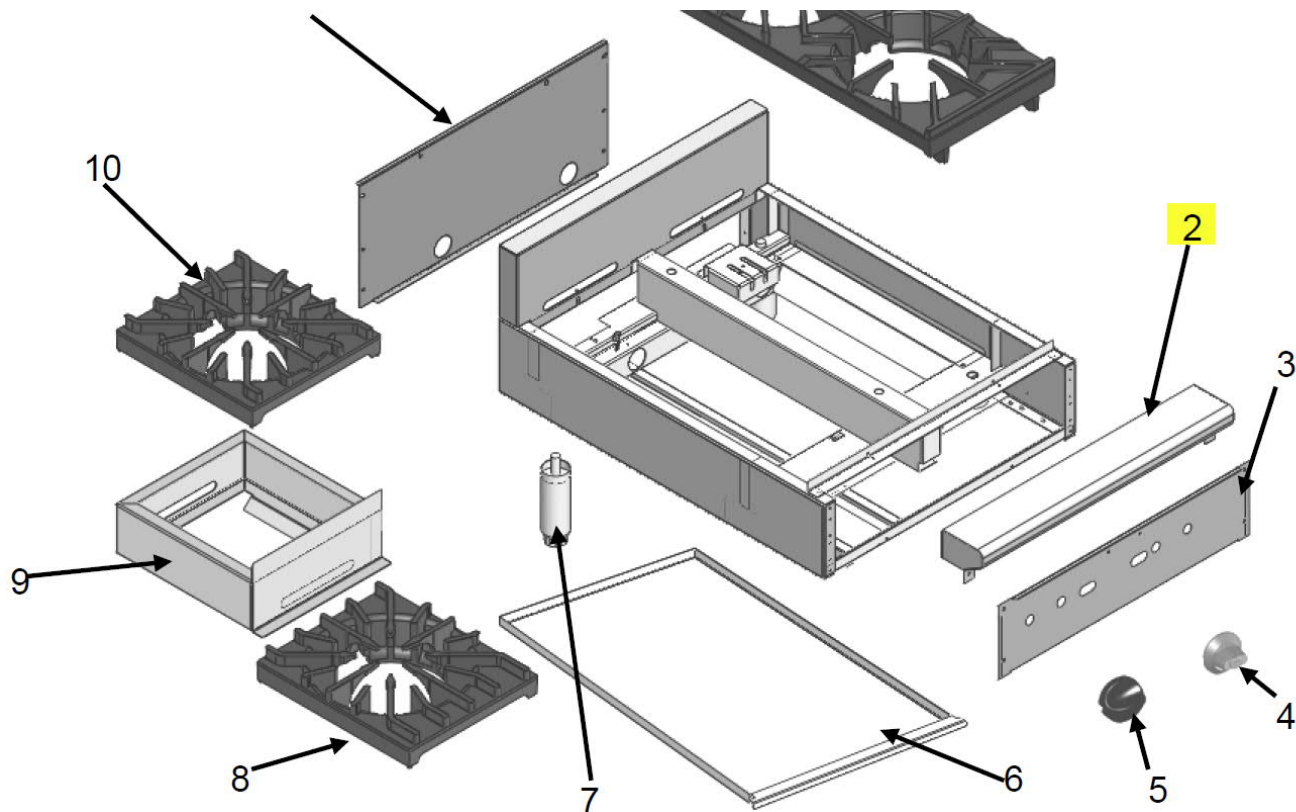
Subject: FW: [EXTERNAL]RE: Seattle Seahawks VMAC
From: Roxanne Holt <Roxanne.Holt@vulcanhart.com>
Date: 6/24/2021, 3:38 PM
To: "ddb@davidbethel.com" <ddb@davidbethel.com>

Hey – this is going to be a fun one!

Can you put together a design that shows: MSA48 and a VHP212 with “a custom overlapping front top ledge” where it “looks” like all one unit? They will still be basically stand-alone unit, but they want it to “look” like, but a singular ledge across the two.

It looks like the ledges are similar! Let me know if you have any questions!





Thank you,

Roxanne Holt (she/her)
Vulcan/Wolf – Ranges
Baltimore, MD
410-800-5192

From: Roxanne Holt
Sent: Thursday, June 24, 2021 3:27 PM
To: keith@rhi-solutions.com; Josh Jackson <Josh.Jackson@vulcanhart.com>; Chris Cook <chris.cook@itwce.com>
Subject: RE: [EXTERNAL]RE: Seattle Seahawks VMAC

Okay! I will more forward with that 😊

Hold for the design work from David!

Thank you,

Roxanne Holt (she/her)
Vulcan/Wolf – Ranges
Baltimore, MD
410-800-5192

From: keith@rhi-solutions.com <keith@rhi-solutions.com>
Sent: Thursday, June 24, 2021 3:16 PM
To: Roxanne Holt <Roxanne.Holt@vulcanhart.com>; Josh Jackson <Josh.Jackson@vulcanhart.com>; Chris Cook <chris.cook@itwce.com>
Subject: RE: [EXTERNAL]RE: Seattle Seahawks VMAC

Hi Rox,

That would be super helpful!

Thanks,

Keith Wilkins
RHI Solutions
5628 Airport Way South #250

Seattle, WA 98108
425-251-0531 ext. 106 office
425-444-2917 cell
keith@rhi-solutions.com
www.rhi-solutions.com

From: Roxanne Holt <Roxanne.Holt@vulcanhart.com>
Sent: Thursday, June 24, 2021 12:07 PM
To: Keith Wilkins - RHI Solutions <keith@rhi-solutions.com>; Josh Jackson <Josh.Jackson@vulcanhart.com>; Chris Cook <chris.cook@itwce.com>
Subject: RE: [EXTERNAL]RE: Seattle Seahawks VMAC

Hello Keith,

Unfortunately, we are not able to create the 48" RRG plate/two burner combo unit with standard Vulcan range equipment (both HD or griddle broiler units). However, my engineer, Josh, reminded me that we have the option of working with Troy (at custom Stainless – our suite fabricator) to possibly custom create an overlapping front ledge to “tie” the units together. This would be the most time friendly and price economical solution for all.

If you want to move down this avenue, I can help with getting the specs to David to help with the design work, and then to Troy for pricing, if you would like to go that route?

Thank you,

Roxanne Holt (she/her)
Vulcan/Wolf – Ranges
Baltimore, MD
410-800-5192

From: keith@rhi-solutions.com <keith@rhi-solutions.com>
Sent: Wednesday, June 23, 2021 12:06 PM
To: Roxanne Holt <Roxanne.Holt@vulcanhart.com>; Josh Jackson <Josh.Jackson@vulcanhart.com>; Chris Cook <chris.cook@itwce.com>
Subject: [EXTERNAL]RE: Seattle Seahawks VMAC

[EXTERNAL]

Attached is a sketch from the customer as well. You can ignore the 4-burner unit as that is going to be separate on a 24" stand. The 48" griddle and 2-burner hot plate would be on its own, 60" equipment stand.

Thank you!!

Keith Wilkins
RHI Solutions
5628 Airport Way South #250
Seattle, WA 98108
425-251-0531 ext. 106 office
425-444-2917 cell
keith@rhi-solutions.com
www.rhi-solutions.com

From: Roxanne Holt <Roxanne.Holt@vulcanhart.com>
Sent: Wednesday, June 23, 2021 8:59 AM
To: Josh Jackson <Josh.Jackson@vulcanhart.com>; Chris Cook <chris.cook@itwce.com>
Cc: Keith Wilkins - RHI Solutions <keith@rhi-solutions.com>
Subject: Seattle Seahawks VMAC

Customer needs a countertop 48" Rapid Recovery with 2-OTB, but the kicker is they need it be to connected together with a common ledge.

They don't necessarily need a common gas connection.

[@Josh](#) – can we do a 48" RRG in HD?

[@Chris](#) – if not, can you do a PVR thru your engineering group for a common front ledge to span a MSA48 and a VHP212.

Thank you,

Roxanne Holt (she/her)
Vulcan/Wolf – Ranges
Baltimore, MD

410-800-5192

— Attachments: —

VHP, AHP Series Parts Manual F37127.pdf

563 KB

900RX_MSA Griddle Parts Catalog F38316 (05-21).pdf

1.1 MB