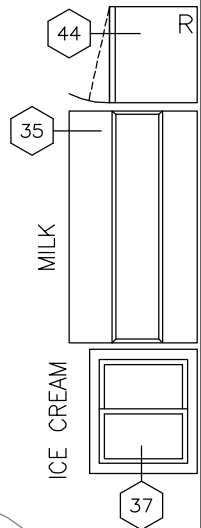
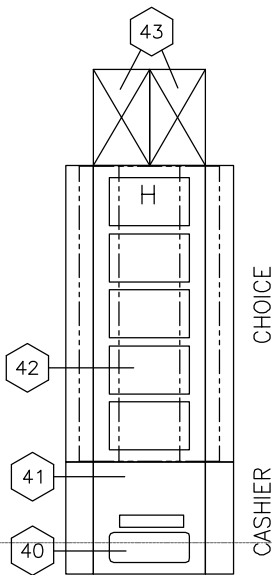
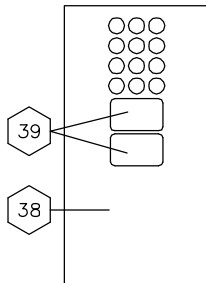


HOT FOOD



E
2"
O 1 1/2"
K.E.C.-
BY



CONDIMENTS

ROLL-DOWN
CLOSURE BY
GEN. CONTR.

R

Q

P

N

M

L

K

J

H

G

F

E

D

C

B

A

ELECTRICAL SCHEDULE

- 1 A

120-60-1, 7.0 A., E.C. APPROX. 8'-6" A.F.F. (ELECT. CONTR. TO CONNECT TO J.B. ON TOP EXTERIOR OF WALK-IN FOR P.W. DOOR SECTION AND FIELD WIRE CENTER LIGHT. HEATED PRESSURE RELIEF PORT AND DRAIN LINE HEAT TAPE. SEE WALK-IN NOTES #5, #6, #7 & #11 FOR ADDITIONAL ELECTRICAL INFORMATION)
- 1 B

120-60-1, 5.0 A., E.C. APPROX. 8'-6" A.F.F. (ELECT. CONTR. TO CONNECT TO J.B. ON TOP EXTERIOR OF WALK-IN FOR P.W. DOOR SECTION AND FIELD WIRE CENTER LIGHT. SEE WALK-IN NOTES #5, #6, #7 & #11 FOR ADDITIONAL ELECTRICAL INFORMATION)
- 1 C

120-60-1, 0.8 A., J.B. 9'-0" A.F.F. (ELECT. CONTR. TO CONNECT TO REFRIGERATOR EVAPORATOR INSIDE WALK-IN)
- 1 D

208-60-3, 17.1 A., J.B. ON BUILDING ROOF (ELECT. CONTR. TO CONNECT TO FREEZER CONDENSING UNIT, AND FROM CONDENSING UNIT TO EVAPORATOR INSIDE WALK-IN - CONDENSING UNIT NOT SHOWN ON PLAN. SEE DETAIL #2/K101)
- 1 E

208-60-1, 5.7 A., J.B. ON ROOF (ELECT. CONTR. TO CONNECT TO REFRIGERATOR CONDENSING UNIT - CONDENSING UNIT NOT SHOWN ON PLAN. SEE DETAIL #2/K101)
- 11A

120-60-1, 4.9 A., D.R. 86" A.F.F.
- 13A

208-60-1, 24.0 A., S.R. 48" A.F.F. (NEMA #6-30P PLUG FURNISHED ON HOT WATER DISPENSER)
- 15A

120-60-1, 10.0 A., D.R. 48" A.F.F. (CONVENIENCE RECEPTACLE)
- 15B

208-60-3, 3.2 A., J.B. 24" A.F.F. (ELECT. CONTR. TO CONNECT TO SCRAP COLLECTOR)
- 17A

208-60-1, 20.0 A., S.R. 48" A.F.F. (NEMA #6-30P PLUG FURNISHED ON MICROWAVE OVEN)
- 18A

120-60-1, 10.0 A. + 10.0 A., S.U. (ELECT. CONTR. TO CONNECT TO J.B. IN BASE FOR TWO P.W. D.R.'S IN WORK TABLE - CONVENIENCE RECEPTABLES)
- 18B

120-60-1, 16.0 A., S.U. (ELECT. CONTR. TO CONNECT TO J.B. IN BASE FOR P.W. D.R. IN WORK TABLE FOR HEATED CABINET - ITEM #24)
- 24A

120-60-1, 16.0 A., D.R. 24" A.F.F. (NEMA #5-20P PLUG FURNISHED ON HEATED CABINET)
- 27A

480-60-3, 19.0 A., J.B. 24" A.F.F. (ELECT. CONTR. TO CONNECT TO TILT SKILLET)
- 28A

480-60-3, 23.3 A., J.B. 42" A.F.F. (ELECT. CONTR. TO CONNECT TO COMBINATION OVEN)
- 28B

120-60-1, 9.8 A., D.R. 36" A.F.F. (CONVECTION OVEN FAN MOTOR)
- 29A

120-60-1, 9.8 A., D.R. 48" A.F.F. (OVEN FAN MOTOR FOR ONE DECK. TWO RECEPTABLES REQUIRED - ONE FOR EACH OVEN DECK)
- 32A

120/208-60-1, 15.7 A., S.R. 4" A.F.F. (NEMA #14-20P PLUG FURNISHED ON ENTREE COUNTER)
- 34A

120-60-1, 1.0 A., D.R. 4" A.F.F. (DISPLAY LIGHTS IN FOOD SHIELD)
- 35A

120-60-1, 7.2 A., D.R. 24" A.F.F.
- 37A

120-60-1, 1.0 A., D.R. 24" A.F.F.
- 40A

120-60-1, 10.0 A., D.R. 4" A.F.F. (DEDICATED CIRCUIT REQUIRED FOR CASHIER COMPUTER. ALSO PROVIDE NETWORK CONNECTION)
- 42A

120/208-60-1, 15.7 A., S.R. 4" A.F.F. (NEMA #14-20P PLUG FURNISHED ON CHOICE COUNTER)
- 44A

120-60-1, 2.0 A., D.R. 24" A.F.F.
- 46A

480-60-3, 20.0 A., J.B. 70" A.F.F. (ELECT. CONTR. TO CONNECT TO BOOSTER HEATER CONNECTION ON DISHWASHER)
- 46B

480-60-3, 27.9 A., J.B. 70" A.F.F. (ELECT. CONTR. TO CONNECT TO MOTORS, CONTROLS AND TANK HEAT CONNECTION ON DISHWASHER)
- 48A

208-60-3, 3.2 A., J.B. 24" A.F.F. (ELECT. CONTR. TO CONNECT TO SCRAP COLLECTOR)

PLUMBING SCHEDULE

- 1 A

F.D. WITH FUNNEL STRAINER (K.E.C. TO EXTEND DRAIN LINE FROM TWO EVAPORATORS INSIDE WALK-IN)
- 10A

1-1/2" WASTE, S.O. 20" A.F.F. (PLUMB. CONTR. TO CONNECT TO SINK)
- 10B

1/2" H.W., S.O. 18" A.F.F. (PLUMB. CONTR. TO CONNECT TO WALL-MOUNTED FOOT PEDAL VALVE - H.W. & C.W. INLETS 2'-1/2" ON CENTER. SEE DETAIL #6/K101)
- 10C

1/2" C.W., S.O. 16" A.F.F. (PLUMB. CONTR. TO CONNECT TO WALL-MOUNTED FOOT PEDAL VALVE - H.W. & C.W. INLETS 2'-1/2" ON CENTER. SEE DETAIL #6/K101)
- 15A

3/4" H.W., S.O. 18" A.F.F. (PLUMB. CONTR. TO CONNECT TO PRE-RINSE FAUCET AND SCRAP COLLECTOR)
- 15B

3/4" C.W., S.O. 18" A.F.F. (PLUMB. CONTR. TO CONNECT TO PRE-RINSE FAUCET, SCRAP COLLECTOR AND THROUGH WATER FILTER MOUNTED IN BASE OF COUNTER TO HOT WATER DISPENSER - ITEM #13)
- 15C

2" WASTE, S.O. 8" A.F.F. (PLUMB. CONTR. TO CONNECT TO SCRAP COLLECTOR)
- 15D

1/2" H.W., S.O. 18" A.F.F. (PLUMB. CONTR. TO CONNECT TO FAUCET)
- 15E

1/2" C.W., S.O. 18" A.F.F. (PLUMB. CONTR. TO CONNECT TO FAUCET)
- 15F

2" WASTE, S.U. TO A 12" X 12" FLOOR SINK WITHOUT GRATE AND WITH MESH BUCKET LINER - BY PLUMB. CONTR. (PLUMB. CONTR. TO EXTEND DRAIN LINE FROM SINK)
- 25A

3/4" GAS (70,000 BTU/HR.), S.O. 30" A.F.F. (PLUMB. CONTR. TO CONNECT TO RANGE)
- 26A

3" WASTE, S.U. TO A 30" X 30" STAINLESS STEEL DRAIN TROUGH FURNISHED BY K.E.C. AND INSTALLED BY PLUMB. CONTR. (SEE DETAIL #3/K101)
- 27A

1/2" H.W., S.O. 30" A.F.F. (PLUMB. CONTR. TO CONNECT TO POT FILLER/SPRAY ASSEMBLY ON TILT SKILLET)
- 27B

1/2" C.W., S.O. 30" A.F.F. (PLUMB. CONTR. TO CONNECT TO POT FILLER/SPRAY ASSEMBLY ON TILT SKILLET)
- 28A

3" WASTE, S.U. TO A 12" X 12" FLOOR SINK WITHOUT GRATE AND WITH MESH BUCKET LINER - BY PLUMB. CONTR. (PLUMB. CONTR. TO EXTEND COPPER DRAIN LINE FROM COMBINATION OVEN)
- 28B

3/4" C.W. (22-87 P.S.I.), S.O. 36" A.F.F. (PLUMB. CONTR. TO CONNECT FLEXIBLE WATER LINES WITH GARDEN HOSE CONNECTIONS TO INLET FOR CLEANING SYSTEM AND RECOIL HAND SHOWER, AND THROUGH WALL MOUNTED WATER FILTER TO WATER INJECTION INLET ON COMBINATION OVEN/STEAMER. WATER FILTER FURNISHED WITH EQUIPMENT AND INSTALLED BY PLUMB. CONTR., PRESSURE REDUCING VALVE AND BACKFLOW PREVENTER AS REQUIRED FURNISHED AND INSTALLED BY PLUMB. CONTR.)
- 28C

3/4" GAS (60,000 BTU/HR.), S.O. 30" A.F.F. (PLUMB. CONTR. TO CONNECT CONVECTION OVEN TO GAS SUPPLY WITH GAS CONNECTOR ASSEMBLY FURNISHED WITH EQUIPMENT. SEE GAS CONNECTOR ASSEMBLY DETAIL #4/K101)
- 29A

1" GAS (120,000 BTU/HR.), S.O. 30" A.F.F. (PLUMB. CONTR. TO CONNECT TO GAS SUPPLY WITH GAS CONNECTOR ASSEMBLY FURNISHED WITH EQUIPMENT. SEE GAS CONNECTOR ASSEMBLY DETAIL #4/K101)
- 32A

F.D. WITH FUNNEL STRAINER (PLUMB. CONTR. TO EXTEND FIXED DRAIN LINE FROM DRAIN VALVE ON ENTREE COUNTER)

GENERAL NOTES

- 42A

F.D. WITH FUNNEL STRAINER (PLUMB. CONTR. TO EXTEND FIXED DRAIN LINE FROM DRAIN VALVE ON CHOICE COUNTER)
- 46A

3" WASTE, S.U. TO A 12" X 12" FLOOR SINK WITHOUT GRATE - BY PLUMB. CONTR. (PLUMB. CONTR. TO EXTEND DRAIN LINE FROM DISHWASHER AND FROM DRAIN IN CLEAN DISH TABLE - ITEM #45)
- 46B

1/2" C.W., S.O. 18" A.F.F. (PLUMB. CONTR. TO CONNECT TO DRAIN WATER TEMPERING CONNECTION ON DISHWASHER)
- 46C

3/4" H.W. (140 DEGREES MIN.), S.O. 18" A.F.F. (PLUMB. CONTR. TO CONNECT TO COMMON H.W. CONNECTION ON DISHWASHER. 126 G.P.H. REQUIRED AT 20 P.S.I. FLOW PRESSURE)
- 47A

3/4" H.W., S.O. 18" A.F.F. (PLUMB. CONTR. TO CONNECT TO CONTROL VALVE FOR HOSE REEL AND TO SCRAP COLLECTOR. BACKFLOW PREVENTER AS REQUIRED ON CONNECTION TO HOSE REEL FURNISHED AND INSTALLED BY PLUMB. CONTR. SEE HOSE REEL DETAIL #7/K101)
- 47B

3/4" C.W., S.O. 18" A.F.F. (PLUMB. CONTR. TO CONNECT TO CONTROL VALVE FOR HOSE REEL AND TO SCRAP COLLECTOR. BACKFLOW PREVENTER AS REQUIRED ON CONNECTION TO HOSE REEL FURNISHED AND INSTALLED BY PLUMB. CONTR. SEE HOSE REEL DETAIL #7/K101)
- 47C

PLUMB. CONTR. TO CONNECT FROM OUTLET ON HOSE REEL CONTROL VALVE AND EXTEND PIPING INTO WALL, BOW COUNTER, RUN PIPING CONCEALED IN WALL AND STUB OUT OF WALL AT 7'-6" A.F.F. AND CONNECT TO HOSE REEL. SEE HOSE REEL DETAIL #7/K101.
- 48A

2" WASTE, S.O. 8" A.F.F. (PLUMB. CONTR. TO CONNECT TO SCRAP COLLECTOR)
- 48B

1/2" H.W., S.O. 18" A.F.F. (PLUMB. CONTR. TO CONNECT TO FAUCET)
- 48C

1/2" C.W., S.O. 18" A.F.F. (PLUMB. CONTR. TO CONNECT TO FAUCET)
- 48D

3" WASTE, S.U. TO A 12" X 12" FLOOR SINK WITHOUT GRATE AND WITH MESH BUCKET LINER - BY PLUMB. CONTR. (PLUMB. CONTR. TO EXTEND DRAIN LINE FROM TWO SINKS)
- 50A

F.D.
- 51A

1/2" H.W., S.O. 18" A.F.F. (PLUMB. CONTR. TO CONNECT TO PRE-RINSE FAUCET)
- 51B

1/2" C.W., S.O. 18" A.F.F. (PLUMB. CONTR. TO CONNECT TO PRE-RINSE FAUCET)
- 51C

1/2" H.W., S.O. 18" A.F.F. (PLUMB. CONTR. TO CONNECT TO FAUCET)
- 51D

1/2" C.W., S.O. 18" A.F.F. (PLUMB. CONTR. TO CONNECT TO FAUCET)
- 51E

3" WASTE, S.U. TO A 12" X 12" FLOOR SINK WITHOUT GRATE AND WITH MESH BUCKET LINER - BY PLUMB. CONTR. (PLUMB. CONTR. TO EXTEND 2" DRAIN LINE FROM THREE SINKS AND EXTEND TO GREASE INTERCEPTOR AS REQUIRED.)

VENTILATION SCHEDULE

- 46 A

(1) 4" X 16" VENT CONNECTION WITH LOCKING DAMPER, E.C. APPROX. 6" ABOVE CEILING, EXHAUSTING 400 CFM. K.E.C. SHALL EXTEND STAINLESS STEEL DUCT FROM DISHWASHER STRAIGHT UP TO 6" ABOVE FINISHED CEILING. REMAINDER OF DUCT WORK (BY MECHANICAL CONTRACTOR) SHALL BE WATERTIGHT AND SHALL PITCH FOR DRAINAGE TO SOILED (OPPOSITE) END OF DISHWASHER
- 46 B

(1) 4" X 16" VENT CONNECTION WITH LOCKING DAMPER, E.C. APPROX. 6" ABOVE CEILING, EXHAUSTING 200 CFM. K.E.C. SHALL EXTEND STAINLESS STEEL DUCT FROM DISHWASHER STRAIGHT UP TO 6" ABOVE FINISHED CEILING. REMAINDER OF DUCT WORK (BY MECHANICAL CONTRACTOR) SHALL BE WATERTIGHT AND SHALL PITCH FOR DRAINAGE TO SOILED (THIS) END OF DISHWASHER

WALK-IN NOTES

- ▽

SEE DETAIL #1/K101 FOR SECTION THROUGH INSULATED FLOOR.
- ▽

CENTER LINE OF BREAKER STRIP IN FLOOR.
- ▽

RUN DRAIN LINE EXPOSED IN FREEZER AND REFRIGERATOR, BEHIND SHELVING, AND EXTEND DOWN INTO FUNNEL OF FLOOR DRAIN. PROVIDE "P" TRAP OUTSIDE WALK-IN COMPARTMENT. (BY K.E.C.)
- ▽

PROVIDE SLEEVES FOR DRAIN LINE IN WALLS OF WALK-IN AND IN BUILDING WALL AT CORRECT HEIGHT FOR PROPER DRAINAGE. CAULK ALL SLEEVES (BY K.E.C.)
- ▽

ALL ELECTRICAL CONNECTIONS FOR WALK-IN INCLUDING WIRING TO ALL EVAPORATORS, VAPOR-PROOF LIGHTS, DOOR HEATERS, THRESHOLD HEATERS, TIME CLOCK, HEATED PRESSURE RELIEF PORT, WIRING FROM FREEZER EVAPORATOR TO ROOM THERMOSTAT, AND ALL CONTROLS TO BE BY ELECT. CONTR.
- ▽

FREEZER EVAPORATOR SHALL BE ELECTRICALLY CONNECTED TO ITS RESPECTIVE CONDENSING UNIT AS REQUIRED. THE WIRING FROM THE TIME CLOCK ON FREEZER CONDENSING UNIT TO THE ELECTRIC DEFROST HEATERS IN THE EVAPORATOR SHALL BE BY THE ELECT. CONTR. ELECTRICAL INTERCONNECTIONS BETWEEN THE REFRIGERATOR EVAPORATOR AND ITS RESPECTIVE CONDENSING UNIT ARE NOT REQUIRED.
- ▽

REMOTE AIR COOLED FREEZER AND REFRIGERATOR CONDENSING UNITS (ITEM #1) SHALL BE MOUNTED ON METAL RACKS AND FACTORY WIRED. UNITS SHALL BE LOCATED OUTDOORS ON BUILDING ROOF (NOT SHOWN ON PLAN). EXACT LOCATION BY ARCHITECT. SEE DETAIL #2/K101.
- ▽

FREEZER CONDENSING UNIT SHALL BE A KOLPAK #PC348L20P WITH A #EL26-105-2EC-PR-8 EVAPORATOR, WIRED 208-60-3, WITH AN APPROX. TOTAL LOAD OF 17.1 AMPS, INCLUDING EVAPORATOR. A SEPARATE 208-60-1 PHASE LINE SHALL BE RUN BY THE ELECT. CONTR. FROM THE CONTROL PANEL ON THE CONDENSING UNIT TO THE EVAPORATOR IN THE WALK-IN TO HANDLE A 9.8 AMP LOAD FOR THE ELECTRIC DEFROST HEATER. CONDENSING UNIT MEASURES APPROX. 33" X 40" X 22" HIGH AND WEIGHS APPROX. 265 LBS.
- ▽

REFRIGERATOR CONDENSING UNIT SHALL BE A KOLPAK #PC48MOP WITH A #AM16-52-1EC-PR-8 EVAPORATOR WIRED 208-60-1 WITH AN APPROX. TOTAL LOAD OF 5.7 AMPS., NOT INCLUDING EVAPORATOR. CONDENSING UNIT MEASURES APPROX. 26" X 33" X 20" HIGH AND WEIGHS APPROX. 150 LBS.
- ▽

OVERALL HEIGHT OF WALK-IN SHALL BE APPROX. 8'-6 1/4" A.F.F.
- ▽

K.E.C. SHALL PROVIDE METAL TRIM STRIPS TO MATCH WALK-IN FACING WHERE WALK-IN ABUTS BUILDING WALLS, AND CLOSURE PANELS FROM TOP OF WALK-IN TO FINISHED CEILING.
- ▽

FINISHED FLOOR TO BE LEVEL PLUS OR MINUS 1/8".
- ▽

ALL ELECTRIC CONDUIT SHALL BE RUN ON TOP (EXTERIOR) OF WALK-IN AND SHALL HAVE VAPOR SEALS ON INTERIOR AND EXTERIOR OF CONDUIT. ELECTRIC CONDUIT AND VAPOR SEALS FURNISHED AND INSTALLED BY ELECT. CONTR.
- ▽

ALL OPENINGS AND/OR SLEEVES IN WALLS, FLOOR OR ROOF FOR THE EXTENSION OF REFRIGERATION LINES, INCLUDING PITCH POCKETS, ETC., SHALL BE PROVIDED BY THE GENERAL CONTRACTOR IN CONSULTATION WITH THE KITCHEN EQUIPMENT CONTRACTOR.

GENERAL NOTES

1.

ALL WORK SHALL BE DONE IN ACCORDANCE WITH APPLICABLE CODES.
2.

ALL DIMENSIONS ARE FROM THE FINISHED SURFACE OF WALLS, FLOORS OR CEILINGS.
3.

ALL DIMENSIONS INDICATED FOR ROUGH-INS SHALL BE TO THE CENTER OF THE ROUGH-IN.
4.

UTILITY REQUIREMENTS SHOWN ON DRAWINGS ARE FOR THE FOOD SERVICE EQUIPMENT ONLY.
5.

GENERAL CONTRACTOR SHALL PROVIDE IN-WALL BACKING FOR ALL WALL MOUNTED FOOD SERVICE EQUIPMENT AS REQUIRED. COORDINATE WITH K.E.C. FOR TYPES, SIZES AND LOCATIONS OF BACKING.

ELECTRICAL NOTES

1.

ELECTRICAL ROUGH-INS AND FINAL CONNECTIONS TO EQUIPMENT SHALL BE BY ELECT. CONTR. MATERIALS FOR EQUIPMENT CONNECTIONS SHALL BE FURNISHED AND INSTALLED BY ELECT. CONTR. EXCEPT AS NOTED ON DRAWINGS.
2.

ELECTRICAL DISCONNECTS ARE NOT FURNISHED WITH EQUIPMENT. THEY SHALL BE FURNISHED AND INSTALLED WHERE REQUIRED BY THE ELECT. CONTR. COORDINATE WITH K.E.C. ON PROPER LOCATIONS.
3.

ALL CONDUIT SHALL BE CONCEALED IN WALLS, FLOOR OR CEILING EXCEPT ONLY WHERE ABSOLUTELY NECESSARY.
4.

ALL CONDUIT AND ELECTRICAL CORDS SHALL BE LOCATED UP OFF THE FLOOR TO FACILITATE FLOOR CLEANING AND SHALL BE SUPPORTED FROM ABOVE. FLOOR MOUNTED SUPPORTS SHALL NOT BE USED.
5.

ELECT. CONTR. SHALL FURNISH AND INSTALL RECEPTABLES OF THE PROPER CONFIGURATION TO ACCOMMODATE THE PLUGS FURNISHED ON THE EQUIPMENT. COORDINATE WITH K.E.C.

PLUMBING NOTES

1.

PLUMBING ROUGH-INS BY PLUMB. CONTR., INCLUDING FLOOR DRAINS, FLOOR SINKS, AND GREASE INTERCEPTORS.
2.

FINAL CONNECTIONS TO EQUIPMENT BY PLUMB. CONTR. PLUMB. CONTR. SHALL COORDINATE WITH THE K.E.C. ON CONNECTIONS TO EQUIPMENT
3.

MATERIALS FOR EQUIPMENT CONNECTIONS INCLUDING PIPING, FITTINGS, STOPS, TRAPS, BACKFLOW PREVENTION DEVICES AND PRESSURE REGULATORS FURNISHED AND INSTALLED BY PLUMB. CONTR. EXCEPT AS NOTED ON DRAWINGS.
4.

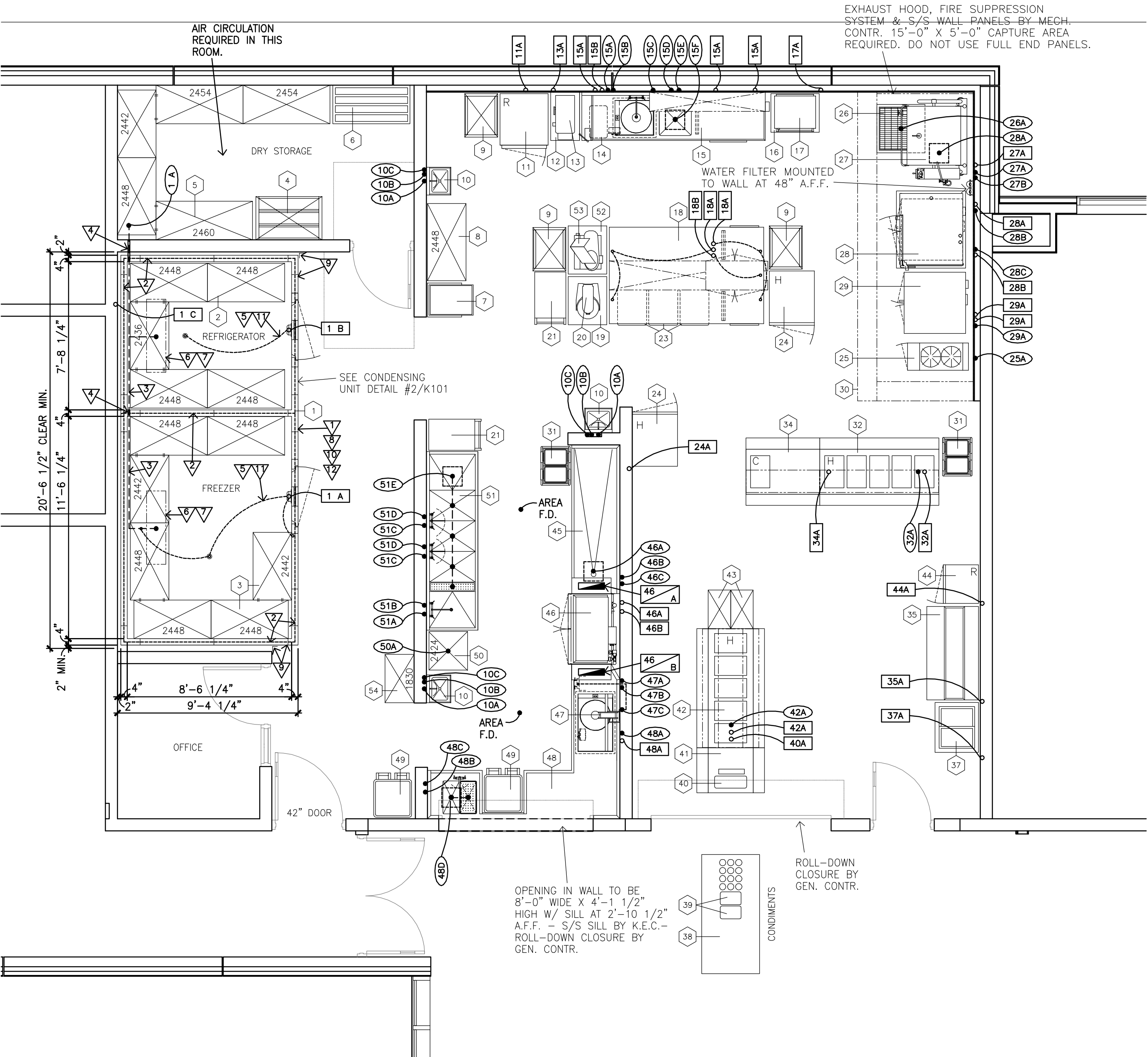
ALL PIPING SHALL BE CONCEALED IN WALLS, FLOOR OR CEILING EXCEPT ONLY WHERE ABSOLUTELY NECESSARY.
5.

ALL PIPING SHALL BE LOCATED UP OFF THE FLOOR TO FACILITATE FLOOR CLEANING AND SHALL BE SUPPORTED FROM ABOVE. FLOOR MOUNTED SUPPORTS SHALL NOT BE USED.
6.

WATER FILTERS OR SOFTENERS NOT FURNISHED WITH EQUIPMENT EXCEPT AS NOTED ON DRAWINGS.
7.

GAS PRESSURE REGULATORS SHALL BE FURNISHED WITH THE EQUIPMENT (BY K.E.C.) AND INSTALLED BY PLUMB. CONTR.
8.

SINKS: FAUCETS AND DRAIN FITTINGS FURNISHED BY K.E.C. AND INSTALLED BY PLUMB. CONTR.



EQUIPMENT SCHEDULE				
ITEM NAME	QTY.	BY VENDOR	BY OWNER	BY MECH. CONTR.
1 WALK-IN REFRIGERATOR/FREEZER	1			
2 REFRIGERATOR SHELVING	1 LOT			
3 FREEZER SHELVING	1 LOT			
4 CAN RACK	1			
5 DRY STORAGE SHELVING	1 LOT			
6 DUNNAGE RACK	1			
7 SHEET PAN DOLLY	1			
8 UTENSIL RACK	1			
9 PAN RACKS	3			
10 HAND SINKS	3			
11 REFRIGERATOR	1			
12 HOT WATER DISPENSER STAND	1			
13 HOT WATER DISPENSER	1			
14 TRASH BIN	1			
15 WORK TABLE	1			
16 MICROWAVE STAND	1			
17 MICROWAVE OVEN	1			
18 WORK TABLE	1			
19 MIXER STAND	1			
20 QT. MIXER	1			
21 UTILITY CARTS	2			
22 NUMBER NOT USED				
23 INGREDIENT BINS	3			
24 HEATED CABINETS	2			
25 OPEN BURNER RANGE	1			
26 FLOOR TROUGH	1			
27 TILT SKILLET	1			
28 STACKED COMBINATION & CONVECTION OVEN	1			
29 CONVECTION OVEN, DOUBLE DECK	1			
30 EXHAUST HOOD	1			BY MECH. CONTR.
31 TRAY DISPENSERS	2			
32 ENTREE COUNTER	1			
33 NUMBER NOT USED				
34 PICK-UP COUNTER	1			
35 MILK CABINET	1			
36 NUMBER NOT USED				
37 ICE CREAM CABINET	1			
38 CONDIMENT COUNTER	1			
39 NAPKIN DISPENSERS	2			
40 CASHIER COMPUTER	1			BY OWNER
41 CASHIER COUNTER	1			
42 CHOICE COUNTER	1			
43 SNACK RACKS	2	BY VENDOR		
44 GLASS DOOR REFRIGERATOR	1			
45 CLEAN DISH TABLE	1			
46 DISHWASHER	1			
47 HOSE REEL	1			
48 SOILED DISH TABLE	1			
49 TRASH BINS	2			
50 SOILED PAN RACK	1			
51 UTENSIL WASHING SINK	1			
52 SLICER STAND	1			
53 SLICER	1			
54 JANITOR SHELVING UNIT	1			

SANTEE / BECKER ASSOCIATES, LLC
FOOD FACILITY DESIGN CONSULTANTS
EXECUTIVE WEST OFFICE BUILDING
6700 SQUIBB ROAD, SUITE 101
MISSION, KANSAS 66202-3231
913/362-1800 FAX 913/362-2609

Davidson Elementary School
North Kansas City School District
5100 North Highland Avenue
Kansas City, MO 64118

REVISIONS:		
#	Description	Date

FOR REFERENCE ONLY

JOB NO: 19128.00
DRAWN BY: JK
CHECKED BY: JK
DATE: 12.21.2020

K201