

NSD
FOODSERVICE
CONSULTANTS

NEXT STEP DESIGN
913 West Street Annapolis, MD 21401
Ph: (410) 263-1200
nextstepdesign.com

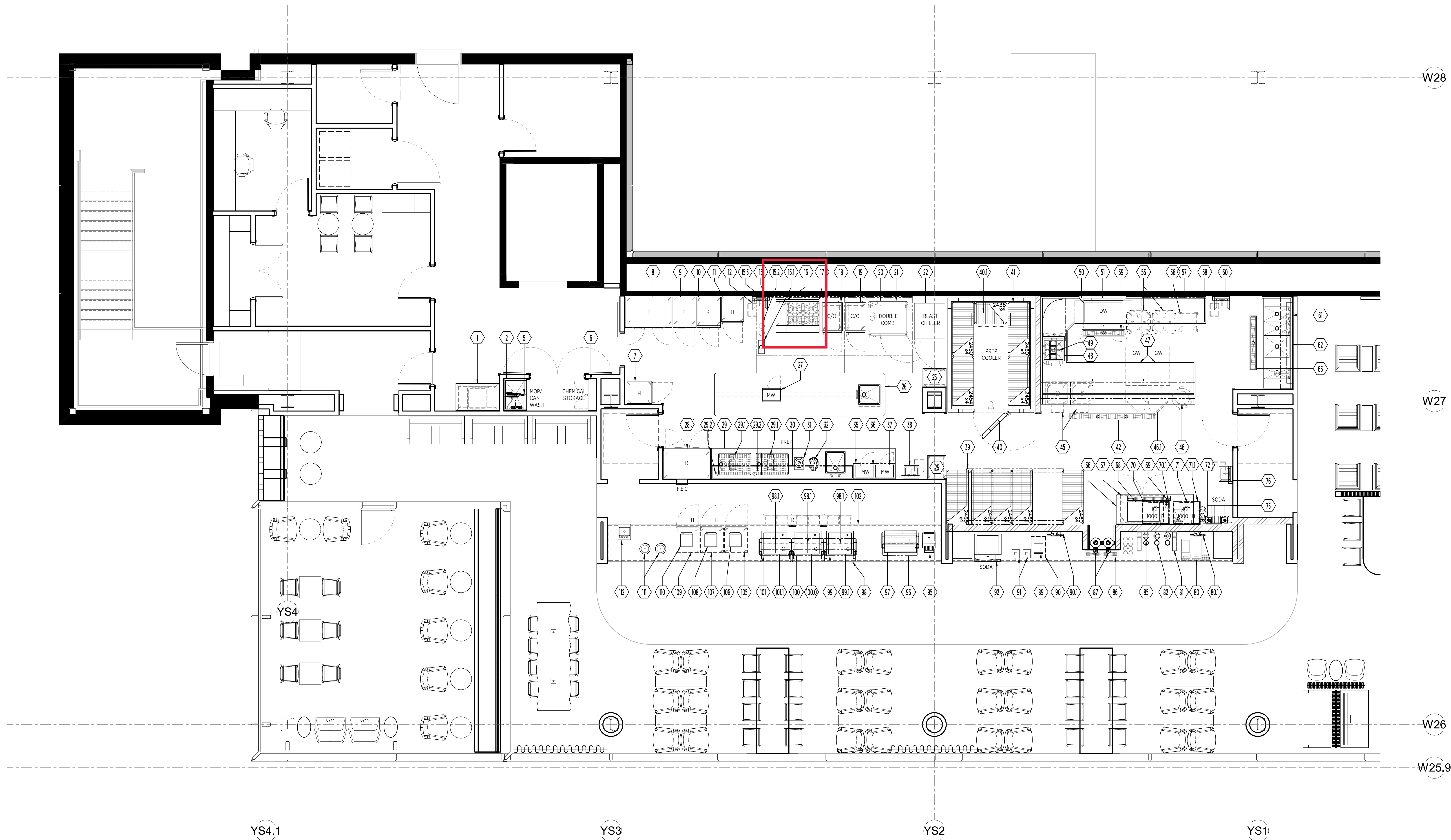
ISSUE	DATE
SD SUBMISSION	11/19/21
50% DESIGN DEVELOPMENT	12/22/21

DATE: 11-17-21 SCALE: 1/4" = 1'-0"

PROJECT #: A-0399 DRAWN: LC

FOODSERVICE EQUIPMENT
FLOOR PLAN

SHEET #:
FS 101-EQ



K.E.C. NOTES

- REFER TO ARCHITECTURAL DRAWINGS FOR FINISH SCHEDULE AND MILLWORK DETAILS.
- FOODSERVICE EQUIPMENT WILL BE SUPPLIED BY THE KITCHEN EQUIPMENT CONTRACTOR (K.E.C.), EXCEPT AS NOTED.
- THE KITCHEN EQUIPMENT CONTRACTOR (K.E.C.) WILL BE RESPONSIBLE FOR THE RECEIVING, STORAGE, DELIVERY TO SITE, UN-CRATING, ASSEMBLY, SETTING IN PLACE, LEVELING, AND SEALING OF ALL EQUIPMENT THAT THEY SUPPLY.
- ALL ROUGH-INS AND FINAL CONNECTIONS BY GENERAL CONTRACTOR, EXCEPT WHERE NOTED.
- K.E.C. TO FIELD VERIFY ALL ROUGH-INS AND CRITICAL DIMENSIONS; COORDINATE WITH GENERAL CONTRACTOR.
- K.E.C. TO HANG & INSTALL ALL WALL MOUNTED SHELVING; USE STAINLESS STEEL TRUSS HEAD HARDWARE ONLY.
- K.E.C. TO PROVIDE MINIMUM 1 YEAR PARTS AND SERVICE WARRANTY FOR REFRIGERATION, COOKING, AND MECHANICAL EQUIPMENT.
- K.E.C. TO HANG EXHAUST HOODS ONLY, AND PROVIDE ANY PERMITS REQUIRED.
- K.E.C. TO PROVIDE FULLY OPERATIONAL FIRE SYSTEM AND OBTAIN ALL APPROVALS.
- K.E.C. TO PROVIDE FINAL START-UP OF ALL REFRIGERATION, RUN REQUIRED REFRIGERANT LINES AND HANG COILED.
- K.E.C. REFRIGERATION CONTRACTOR IS RESPONSIBLE FOR ALL PERMITS RELATED TO WALK-IN COOLERS & REFRIGERATION SYSTEMS AS REQUIRED BY LOCAL JURISDICTION.
- K.E.C. TO PROVIDE ALL GAS PRESSURE REGULATORS FOR EQUIPMENT REQUIRED BY MANUFACTURER. COORDINATE ALL INSTALLATIONS W/ PLUMBING CONTRACTOR AS PER LOCAL CODES.
- K.E.C. - FOR COMPLETE SPECIFICATIONS AND MODEL NUMBERS, THESE PLANS MUST BE BID WITH FOODSERVICE SPECIFICATIONS BOOK.

G.C. NOTES

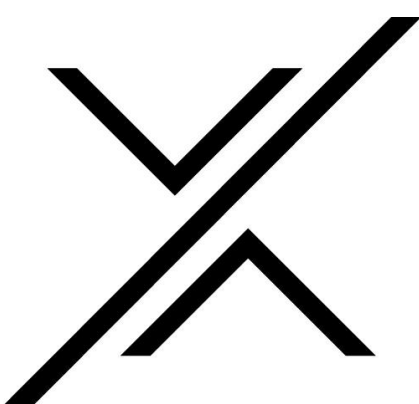
- GENERAL CONTRACTOR TO COORDINATE W/ K.E.C. ON ALL MILLWORK, CRITICAL DIMENSIONS, DELIVERY OF EQUIPMENT & TIME SCHEDULE.
- GENERAL CONTRACTOR WILL REINFORCE ALL WALLS BEHIND WALL-MOUNTED EQUIPMENT. (SEE SPECIAL CONDITIONS PLAN)
- PLUMBER WILL COMPLETELY INSTALL ALL HAND SINKS, FLOOR TROUGHS, DISPOSERS, & FAUCETS (AS PROVIDED BY THE K.E.C.)
- REFER TO ARCHITECTURAL DRAWINGS FOR FINISH SCHEDULE AND MILLWORK DETAILS.
- ALL ROUGH-INS AND FINAL CONNECTIONS WILL BE DONE BY GENERAL CONTRACTOR, EXCEPT WHERE NOTED.
- GENERAL CONTRACTOR TO PREVIEW SPECIAL CONDITIONS PLANS, SHEET SERIES (FS 401-50) FOR ADDITIONAL G.C. RELATED SCOPE OF WORK SUCH AS BUT NOT LIMITED TO, BEER/SODA CONDUITS, WALL BACKINGS, SLAB WORK, FINISHES & MILLWORK CUT-OUTS.
- GENERAL CONTRACTOR TO READ ALL NOTES AND REVIEW ALL FOODSERVICE PLANS FOR COMPLETE SCOPE OF WORK.

ACCESS FLOOR - KITCHEN AREA

1/4" = 1'-0"

EQUIPMENT FLOOR PLAN

COPYRIGHT®
UNAUTHORIZED USE OF THE FOODSERVICE DESIGN DETAILS, AUTOCAD BLOCKS, REVIT FAMILIES, AND SPECIFICATIONS CONTAINED IN THESE DOCUMENTS IS STRICTLY PROHIBITED. NSD, INC. MAINTAINS OWNERSHIP OF SAME. THIS PROHIBITION EXTENDS FROM PRINTED MATERIAL TO ANY ELECTRONIC VERSIONS OF THE SAME. NO USE, OTHER THAN THAT FOR WHICH IT IS INTENDED, IS STRICTLY PROHIBITED WITHOUT WRITTEN PERMISSION FROM NEXT STEP DESIGN, INC. ALL RIGHTS RESERVED.



NSD
FOODSERVICE
CONSULTANTS
NEXT STEP DESIGN
913 West Street Annapolis, MD 21401
Ph: (410) 263-1200
nextstepdesign.com

ISSUE	DATE
SD SUBMISSION	11/19/21
50% DESIGN DEVELOPMENT	12/22/21

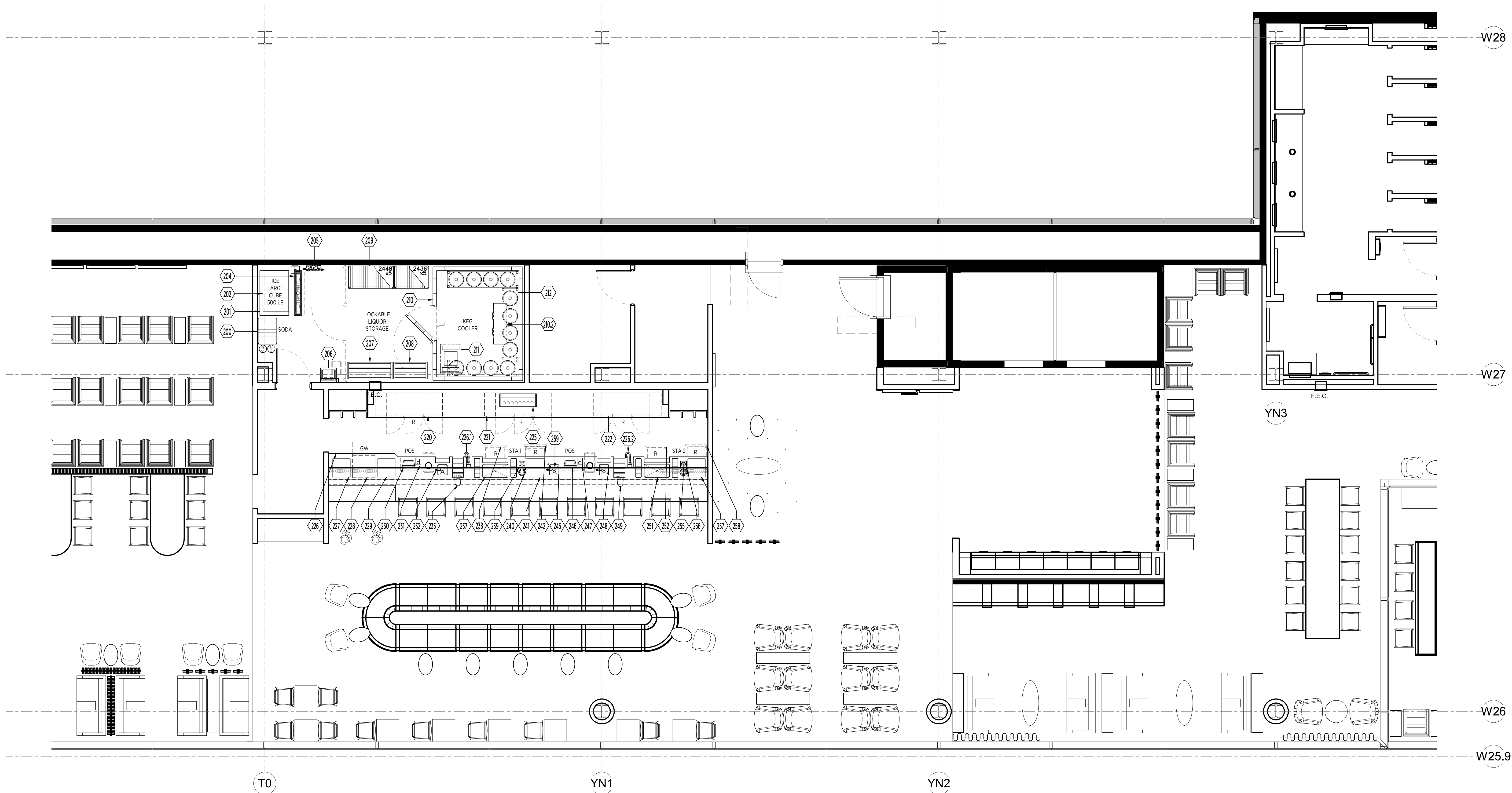
DATE: 11-17-21 SCALE: 1/4" = 1'-0"

PROJECT #: A-0399 DRAWN: LC

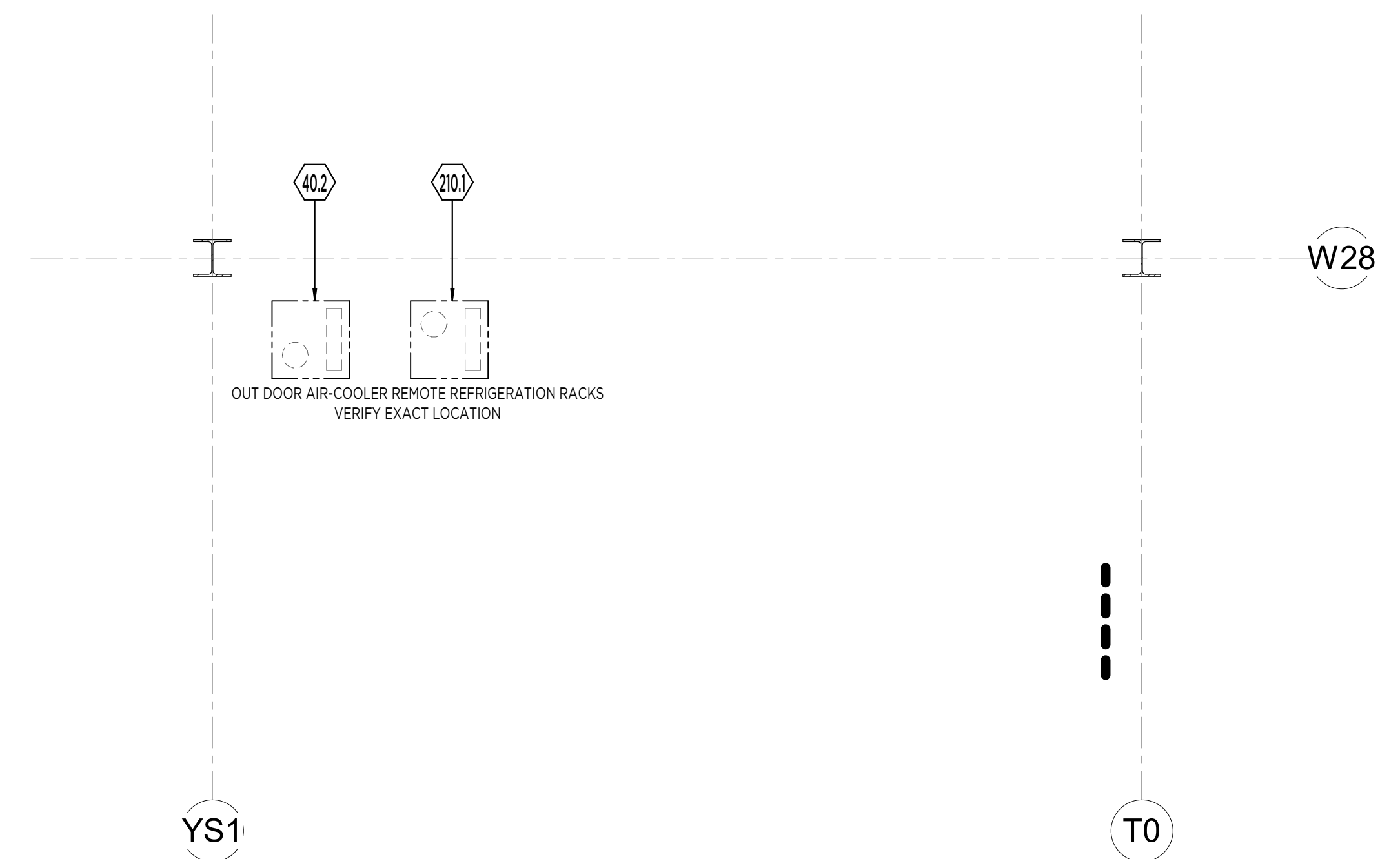
FOODSERVICE EQUIPMENT
FLOOR PLAN

SHEET #:

FS 102-EQ



ACCESS FLOOR - BAR AREA
1/4" = 1'-0"



LEVEL 4 - LOW ROOF
1/4" = 1'-0"

K.E.C. NOTES

- REFER TO ARCHITECTURAL DRAWINGS FOR FINISH SCHEDULE AND MILLWORK DETAILS.
- FOODSERVICE EQUIPMENT WILL BE SUPPLIED BY THE KITCHEN EQUIPMENT CONTRACTOR (K.E.C.), EXCEPT AS NOTED.
- THE KITCHEN EQUIPMENT CONTRACTOR (K.E.C.) WILL BE RESPONSIBLE FOR THE RECEIVING, STORAGE, DELIVERY TO SITE, UN-CRATING, ASSEMBLY, SETTING IN PLACE, LEVELING, AND SEALING OF ALL EQUIPMENT THAT THEY SUPPLY.
- ALL ROUGH-INS AND FINAL CONNECTIONS BY GENERAL CONTRACTOR, EXCEPT WHERE NOTED.
- K.E.C. TO FIELD VERIFY ALL ROUGH-INS AND CRITICAL DIMENSIONS; COORDINATE WITH GENERAL CONTRACTOR.
- K.E.C. TO HANG & INSTALL ALL WALL MOUNTED SHELVING; USE STAINLESS STEEL TRUSS HEAD HARDWARE ONLY.
- K.E.C. TO PROVIDE MINIMUM 1 YEAR PARTS AND SERVICE WARRANTY FOR REFRIGERATION, COOKING, AND MECHANICAL EQUIPMENT.
- K.E.C. TO HANG EXHAUST HOODS ONLY, AND PROVIDE ANY PERMITS REQUIRED.
- K.E.C. TO PROVIDE FULLY OPERATIONAL FIRE SYSTEM AND OBTAIN ALL APPROVALS.
- K.E.C. TO PROVIDE FINAL START-UP OF ALL REFRIGERATION, RUN REQUIRED REFRIGERANT LINES AND HANG COILED.
- K.E.C. REFRIGERATION CONTRACTOR IS RESPONSIBLE FOR ALL PERMITS RELATED TO WALK-IN COOLERS & REFRIGERATION SYSTEMS AS REQUIRED BY LOCAL JURISDICTION.
- K.E.C. TO PROVIDE ALL GAS PRESSURE REGULATORS FOR EQUIPMENT REQUIRED BY MANUFACTURER. COORDINATE ALL INSTALLATIONS W/ PLUMBING CONTRACTOR AS PER LOCAL CODES.
- K.E.C. - FOR COMPLETE SPECIFICATIONS AND MODEL NUMBERS, THESE PLANS MUST BE BID WITH FOODSERVICE SPECIFICATIONS BOOK.

G.C. NOTES

- GENERAL CONTRACTOR TO COORDINATE W/ K.E.C. ON ALL MILLWORK, CRITICAL DIMENSIONS, DELIVERY OF EQUIPMENT & TIME SCHEDULE.
- GENERAL CONTRACTOR WILL REINFORCE ALL WALLS BEHIND WALL-MOUNTED EQUIPMENT. (SEE SPECIAL CONDITIONS PLAN)
- PLUMBER WILL COMPLETELY INSTALL ALL HAND SINKS, FLOOR TROUGHS, DISPOSERS, & FAUCETS (AS PROVIDED BY THE K.E.C.)
- REFER TO ARCHITECTURAL DRAWINGS FOR FINISH SCHEDULE AND MILLWORK DETAILS.
- ALL ROUGH-INS AND FINAL CONNECTIONS WILL BE DONE BY GENERAL CONTRACTOR, EXCEPT WHERE NOTED.
- GENERAL CONTRACTOR TO PREVIEW SPECIAL CONDITIONS PLANS, SHEET SERIES (FS 401-50) FOR ADDITIONAL G.C. RELATED SCOPE OF WORK SUCH AS BUT NOT LIMITED TO, BEER/SODA CONDUITS, WALL BACKINGS, SLAB WORK, FINISHES & MILLWORK CUT-OUTS.
- GENERAL CONTRACTOR TO READ ALL NOTES AND REVIEW ALL FOODSERVICE PLANS FOR COMPLETE SCOPE OF WORK.

EQUIPMENT FLOOR PLAN

COPYRIGHT:
UNAUTHORIZED USE OF THE FOODSERVICE DESIGN, DETAILS, AUTOCAD BLOCKS, REVIT FAMILIES, AND SPECIFICATIONS CONTAINED IN THESE DOCUMENTS IS STRICTLY PROHIBITED. NSD INC. MAINTAINS OWNERSHIP OF SAME. THIS PROHIBITION EXTENDS FROM PRINTED MATERIAL TO ANY ELECTRONIC VERSIONS OF THE SAME. NO USE, OTHER THAN THAT FOR WHICH IT IS INTENDED, IS STRICTLY PROHIBITED WITHOUT WRITTEN PERMISSION FROM NEXT STEP DESIGN, INC. ALL RIGHTS RESERVED.