

CPONT

CENTRAL POINT

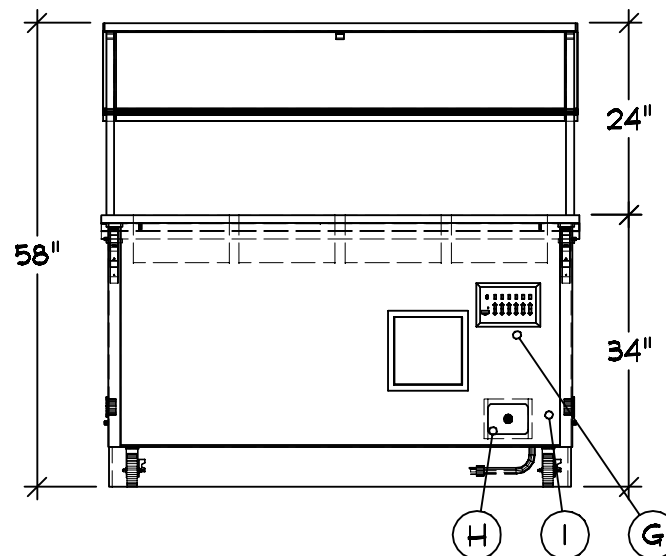
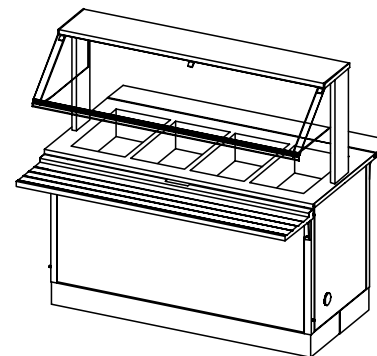
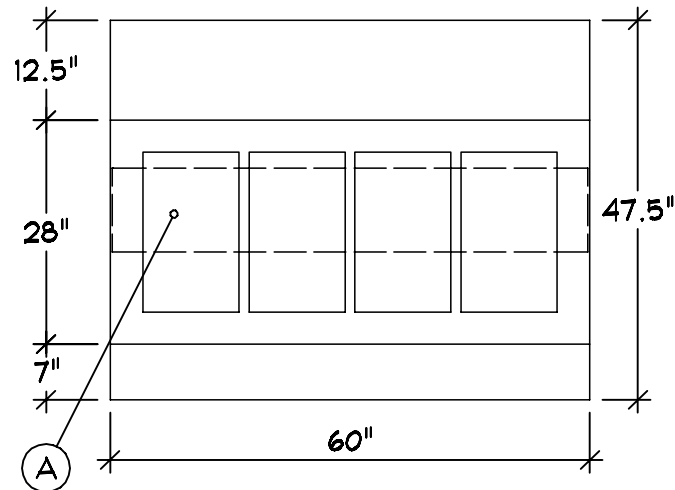
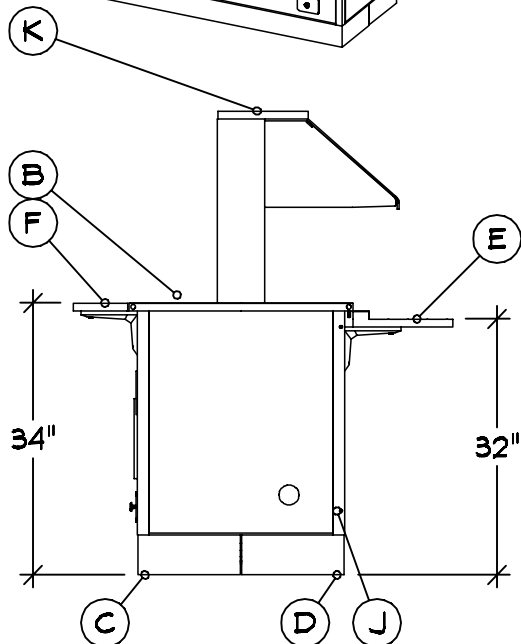
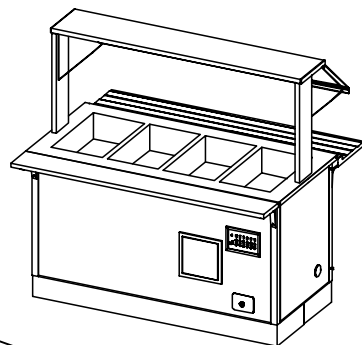
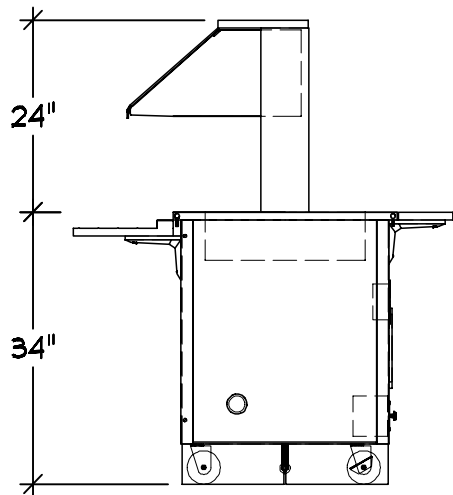


THE VOLLRATH CO., LLC

09-28-21

COPYRIGHT 2021

SHEBOYGAN, WI



- Server 1 | Qty 1
 Hot Food Counter
 A 4 Individual Wet Hot Wells
 B Line Up Locks
 C Casters : 4" (2) w/Brakes
 D Skirt : SST Toe Kick Alls
 E Customer Side V Rib Tray
 Slide w/ Lift-off Brackets
 32" Mounting Height
 F Operator Side Plate Rest
 w/ Lift-off Bracket
 G Controls : Touch Temp
 H Drain : 1\2" w/ Ball Valve
 I Daisy Chain Components
 J Filler Panels And Studs
 K Access Breath Guard

Single Side Buffet
 With Adjustable Height Frame
 Full Width S-S
 Top Shelf 11.5" F-B
 End Panels Both Sides
 *** Does Not Meet Current
 NSF Standards

Finishes And Materials

Top : 18 Ga SST
 Body : Standard Black
 Trim : Standard SST
 Skirt : 18 Ga SST
 Tray Rail : 18 Ga SST
 Plate Rest : 18 Ga SST
 Filler : 18 Ga SST
 Breath Grd : SST Frame, Top
 Shelf To Match Body

| | | |
|-------------------|-----------------------------------|----------|
| VOLTS Ø AMP | SEE DAISY CHAIN SPECS | NEMA |
| PLUMBING | CW: - HW: - WASTE: (1) Ø.5" | INDIRECT |
| | | CPONT |

CENTRAL POINT

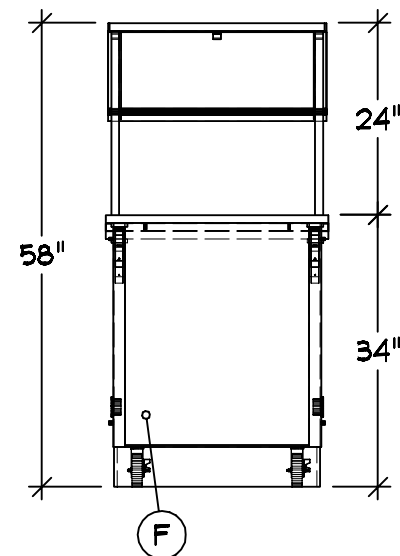
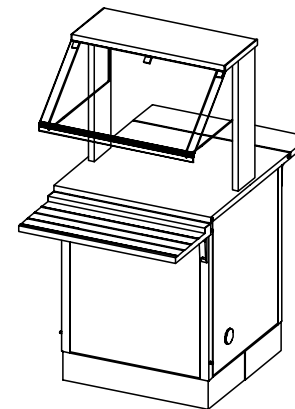
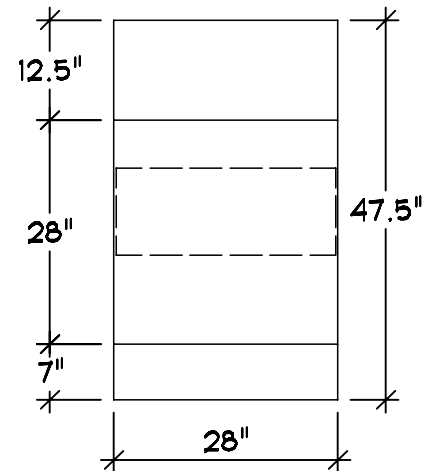
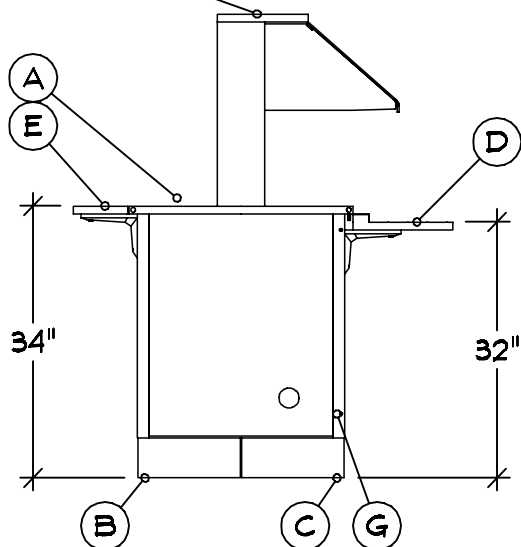
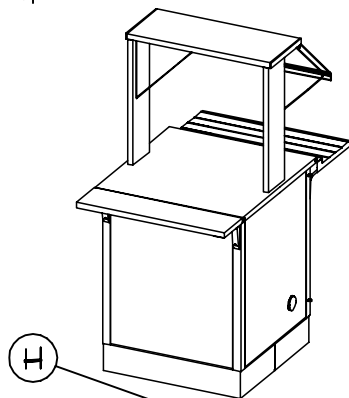
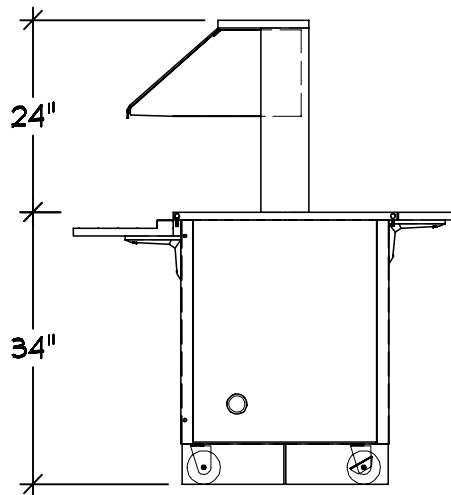


THE VOLLRATH CO., LLC

09-28-21

COPYRIGHT 2021

SHEBOYGAN, WI



Server 2 | Qty 1

Utility Counter

A Line Up Locks

B Casters : 4" (2) w/Brakes

C Skirt : SST Toe Kick Alls

D Customer Side V Rib Tray

Slide w/ Lift-off Brackets

32" Mounting Height

E Operator Side Plate Rest

w/ Lift-off Bracket

F Daisy Chain Components

G Filler Panels And Studs

H Access Breath Guard

Single Side Buffet

With Adjustable Height Frame

Full Width S-S

Top Shelf 11.5" F-B

End Panels Both Sides

*** Does Not Meet Current

NSF Standards

Finishes And Materials

Top : 16 Ga SST

Body : Standard Black

Trim : Standard SST

Skirt : 18 Ga SST

Tray Rail : 18 Ga SST

Plate Rest : 18 Ga SST

Filler : 18 Ga SST

Breath Grd : SST Frame, Top

Shelf To Match Body

VOLTS

AMP

SEE DAISY
CHAIN SPECS

NEMA

CPONT

CENTRAL POINT

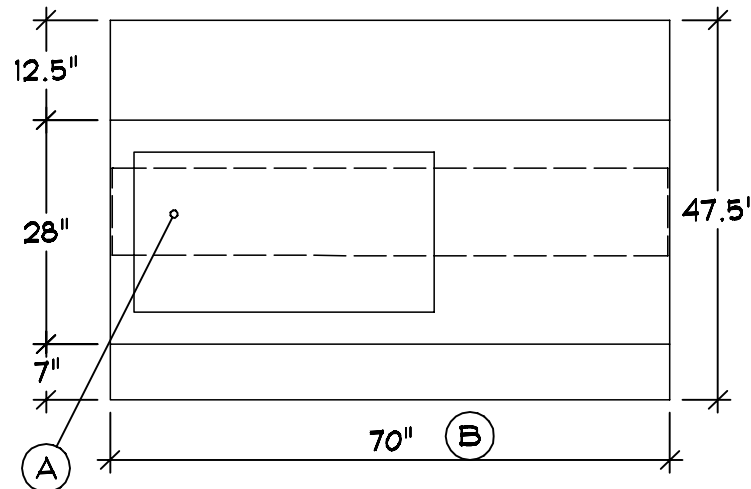
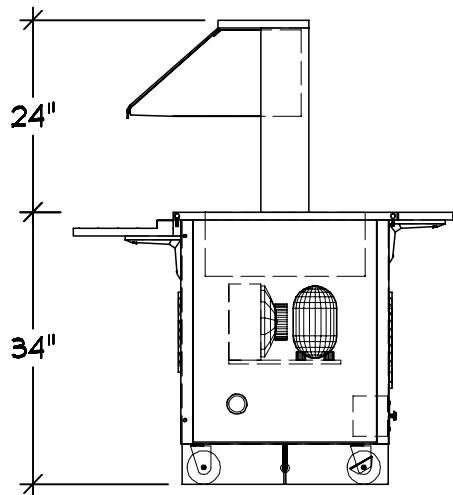


THE VOLLRATH CO., LLC

09-28-21

COPYRIGHT 2021

SHEBOYGAN, WI



- Server 3 | Qty 1
Cold Food Counter
A Custom Configuration
B Custom Counter Width
C Line Up Locks
D Casters : 4" (2) w/Brakes
E Skirt : SST Toe Kick Alls
F Customer Side V Rib Tray
Slide w/ Lift-off Brackets
32" Mounting Height
G Operator Side Plate Rest
w/ Lift-off Bracket
H Drain : 1\2" w/ Ball Valve
I Daisy Chain Components
J Filler Panels And Studs
K Access Breath Guard

Single Side Buffet
With Adjustable Height Frame
Full Width S-S
Top Shelf 11.5" F-B
End Panels Both Sides
*** Does Not Meet Current
NSF Standards

Finishes And Materials

Top : 16 Ga SST
Body : Standard Black
Trim : Standard SST
Skirt : 18 Ga SST
Tray Rail : 18 Ga SST
Plate Rest : 18 Ga SST
Filler : 18 Ga SST
Breath Grd : SST Frame, Top
Shelf To Match Body

VOLTS SEE DAISY
AMP CHAIN SPECS NEMA

PLUMBING CW: -
HW: -
WASTE: (1) Ø.5" INDIRECT

CPONT

CENTRAL POINT



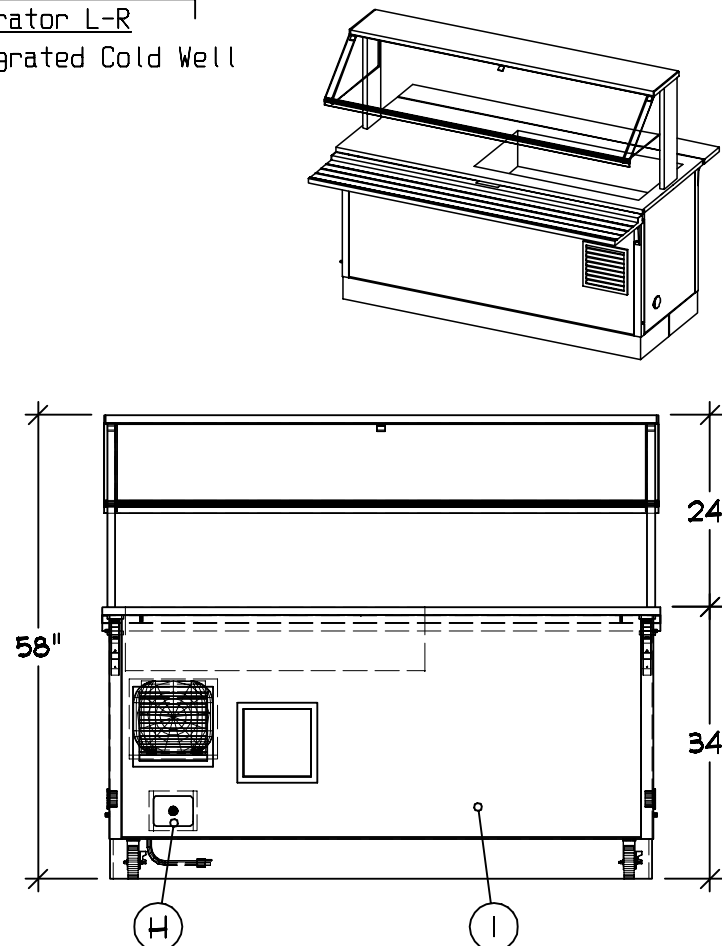
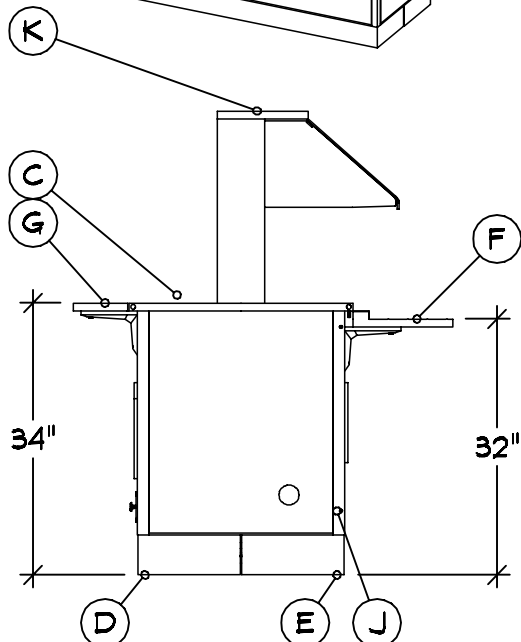
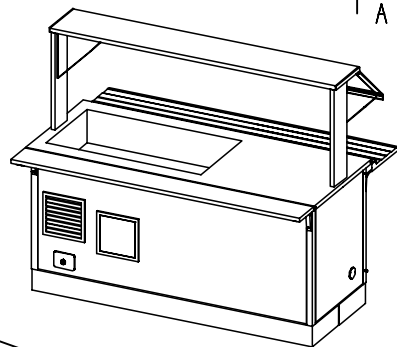
09-28-21

COPYRIGHT 2021

THE VOLLRATH CO., LLC

SHEBOYGAN, WI

A Top Layout Operator L-R
(1) 3 Pan Integrated Cold Well
Open Work Top



GENERAL NOTES - PLEASE READ

CONFIGURATION:

THESE DRAWINGS ARE TO BE USED IN CONJUNCTION WITH THE PREPARED QUOTATION AND MUST BE RECONCILED PRIOR TO RELEASE FOR FABRICATION.

DIMENSIONS:

ALL DIMENSIONS SHOWN ARE $\pm 1/4"$

CONNECTIONS:








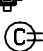




ALL PIPING, FITTINGS, AND INTERCONNECTION SERVICES SHOWN ARE TO BE SUPPLIED AND INSTALLED BY LICENSED CONTRACTORS IN ACCORDANCE WITH ALL LOCAL CODES.

BY OTHERS:

VERIFY ALL EQUIPMENT LISTED AS BY OTHERS FOR SIZE AND MECHANICAL SERVICE REQUIREMENTS.

NOTE:

IN LINE WITH THE POLICY TO CONTINUALLY IMPROVE ITS PRODUCTS, THE MANUFACTURE RESERVES THE RIGHT TO CHANGE MATERIALS AND SPECIFICATIONS WITHOUT NOTICE.

| | |
|---|------------------|
|  | CONNECTION POINT |
|  | COLD WATER |
|  | HOT WATER |
|  | HOT + COLD WATER |
|  | DRAIN |
|  | POWER |
|  | SWITCH |
|  | CORD SET |
|  | CONV OUTLET RECP |
|  | DUPLEX RECPTACLE |
|  | SINGLE RECPTACLE |
|  | REFRIGERATION |



CONFIDENTIAL DESIGN

The Vollrath Company, L.L.C. ("Vollrath") considers this new design proprietary and confidential. Due to the existing relationship of trust and good faith between Vollrath and Recipient, Vollrath is providing this proprietary and confidential design and related information to Recipient with the understanding that Recipient will maintain such design and information in secrecy and will not directly or indirectly use, disseminate, or otherwise disclose this proprietary and confidential information to any outside person or organization without the express written prior consent of The Vollrath Company, L.L.C.

09-27-2021

09-28-2021 : 06:50:48a

CPONT

CENTRAL POINT



THE VOLLRATH CO., LLC

09-28-21

COPYRIGHT 2021
SHEBOYGAN, WI