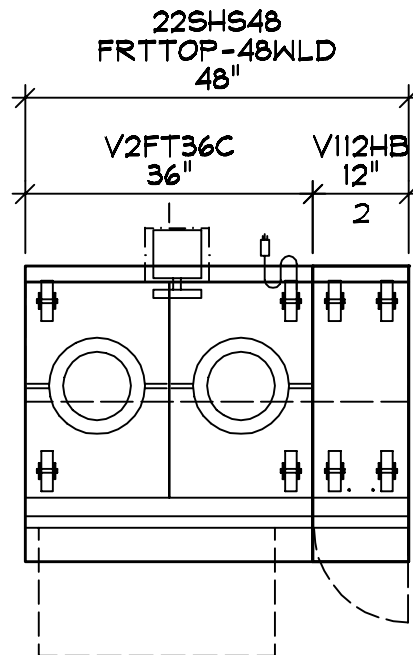






CONNECTIONS



VH-BOCAD

COPYRIGHT (C) 2022




 **VULCAN**

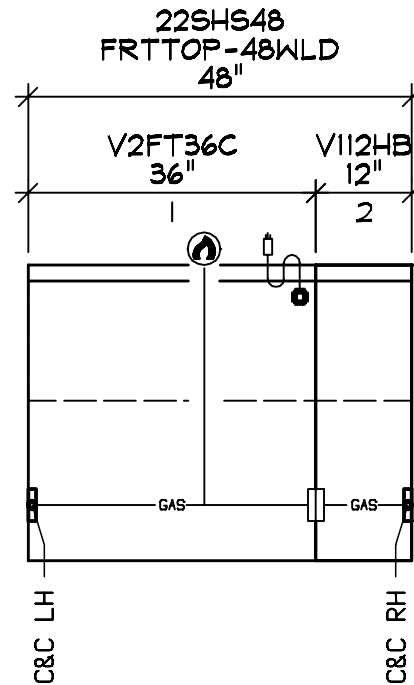
ROXANNE HOLT
BOCAD

BOCADO ATLANTA

01-21-22

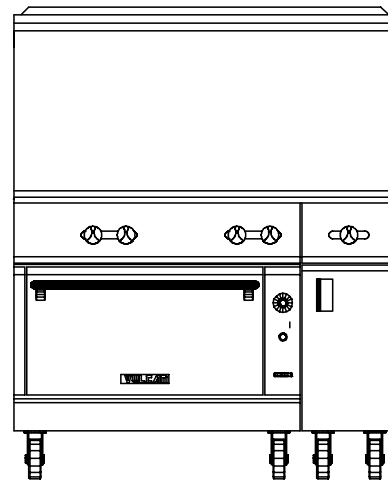
CONNECTIONS

1	1 EA	V2FT36C	RANGE
	82 MBTU	1.25	32 AFF
	120 (1)	4.0A	5-15
2	1 EA	V112HB	RANGE
	30 MBTU	1.25	MANIFOLD



GAS CONNECTION #: 1
 LOCATED IN ITEM: 1
 PIPE SIZE: 1.25 NPT
 CP HEIGHT: 32" AFF
 TOTAL GAS LOAD: 112 MBTU
 INCLUDES ITEMS: 2 1
 NOTE:

ELEVATION



VH-BOCAD

COPYRIGHT (C) 2022

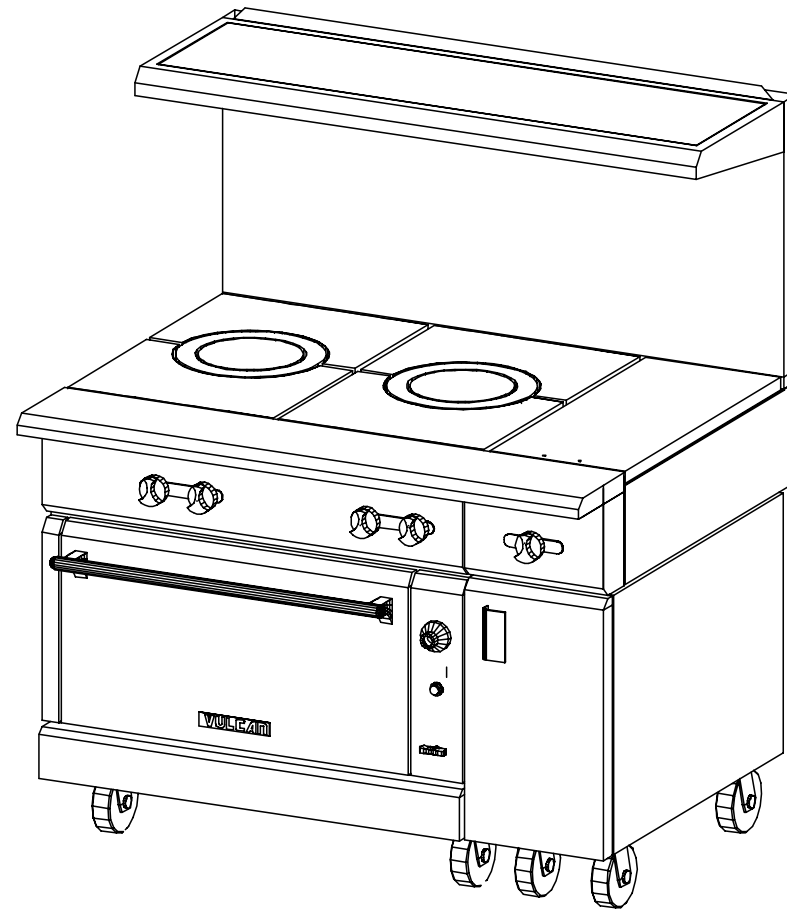
 **VULCAN**

ROXANNE HOLT
BOCAD

BOCADO ATLANTA

01-21-22

SSS VIEW



VH-BOCAD

COPYRIGHT (C) 2022

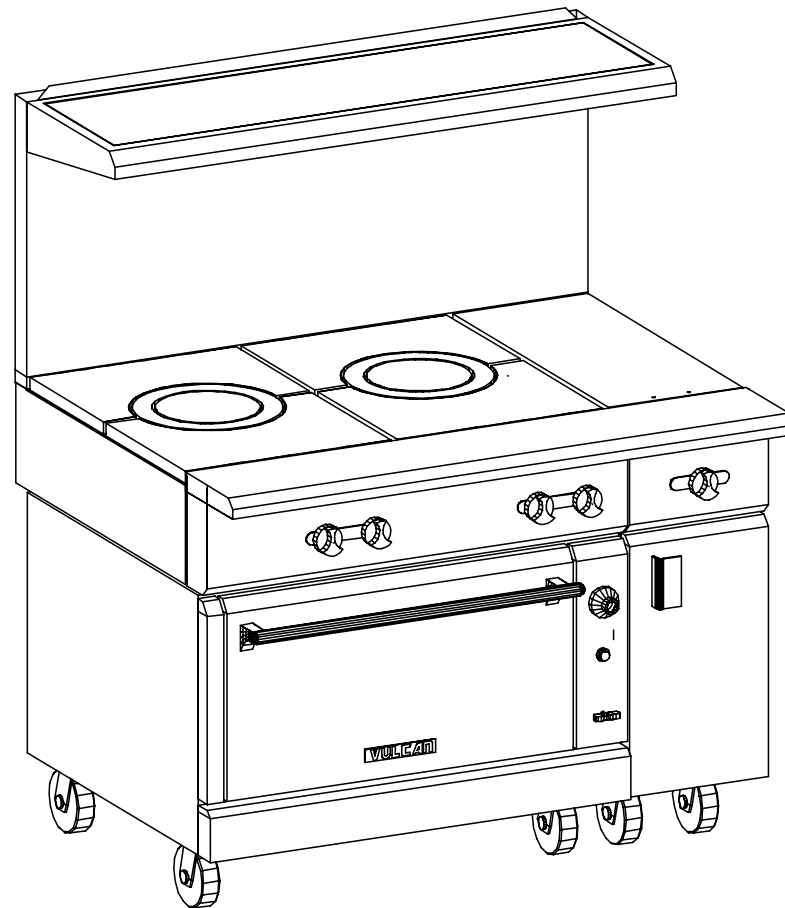
 **VULCAN**

ROXANNE HOLT
BOCAD

BOCADO ATLANTA

01-21-22

SSW VIEW



VH-BOCAD

COPYRIGHT (C) 2022

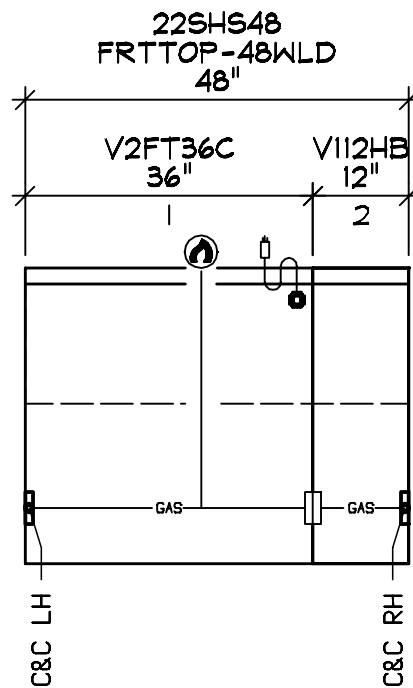
 **VULCAN**

ROXANNE HOLT
BOCAD

BOCADO ATLANTA

01-21-22

CONNECTIONS



VH-BOCAD

COPYRIGHT (C) 2022

 **VULCAN**

ROXANNE HOLT
BOCAD

BOCADO ATLANTA

01-21-22

GENERAL NOTES - PLEASE READ**VENTILATION:**

ALL COOKING EQUIPMENT MUST BE VENTILATED BY AN APPROVED APPLIANCE IN ACCORDANCE WITH ALL APPLICABLE CODES.

FIRE SUPPRESSION:

ALL COOKING EQUIPMENT MUST BE PROTECTED BY AN APPROVED FIRE SUPPRESSION SYSTEM IN ACCORDANCE WITH ALL APPLICABLE CODES.

CONNECTIONS:

ALL PIPING, FITTINGS, AND INTERCONNECTION SERVICES SHOWN ARE TO BE SUPPLIED AND INSTALLED BY LICENSED CONTRACTORS IN ACCORDANCE WITH ALL LOCAL CODES.

GAS CONNECTIONS:








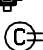
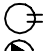





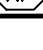



EXTERNAL GAS REGULATORS, FLEXIBLE GAS LINES AND RESTRAINING CABLES PROVIDED WITH THE EQUIPMENT MUST BE INSTALLED BY LICENSED CONTRACTORS IN ACCORDANCE WITH ALL LOCAL CODES. INCOMING GAS MANIFOLD SUPPLY PRESSURE MUST NOT EXCEED 0.5 PSI (14" W.C.)

BY OTHERS:

VERIFY ALL EQUIPMENT LISTED AS BY OTHERS FOR SIZE AND MECHANICAL SERVICE REQUIREMENTS.

NOTE:

IN LINE WITH THE POLICY TO CONTINUALLY IMPROVE ITS PRODUCTS, THE MANUFACTURER RESERVE THE RIGHT TO CHANGE MATERIALS AND SPECIFICATIONS WITHOUT NOTICE.

	CONNECTION POINT
	COLD WATER
	HOT WATER
	HOT + COLD WATER
	DRAIN
	POWER
	SWITCH
	CORD SET
	CONV OUTLET RECP
	DUPLEX RECPTACLE
	SINGLE RECPTACLE
	GAS
	STEAM SUPPLY
	STEAM RETURN
	STEAM TAKE OFF
	EXHAUST VENT
	SUPPLY VENT
	REFRIGERATION

01-21-2022

01-21-2022 : 08:06:46a

Roxanne Holt
VULCAN HART COMPANY

PROJECT CODE

BOCAD

v. 410-282-4322

Email: roxanne.holt@vulcanhart.com